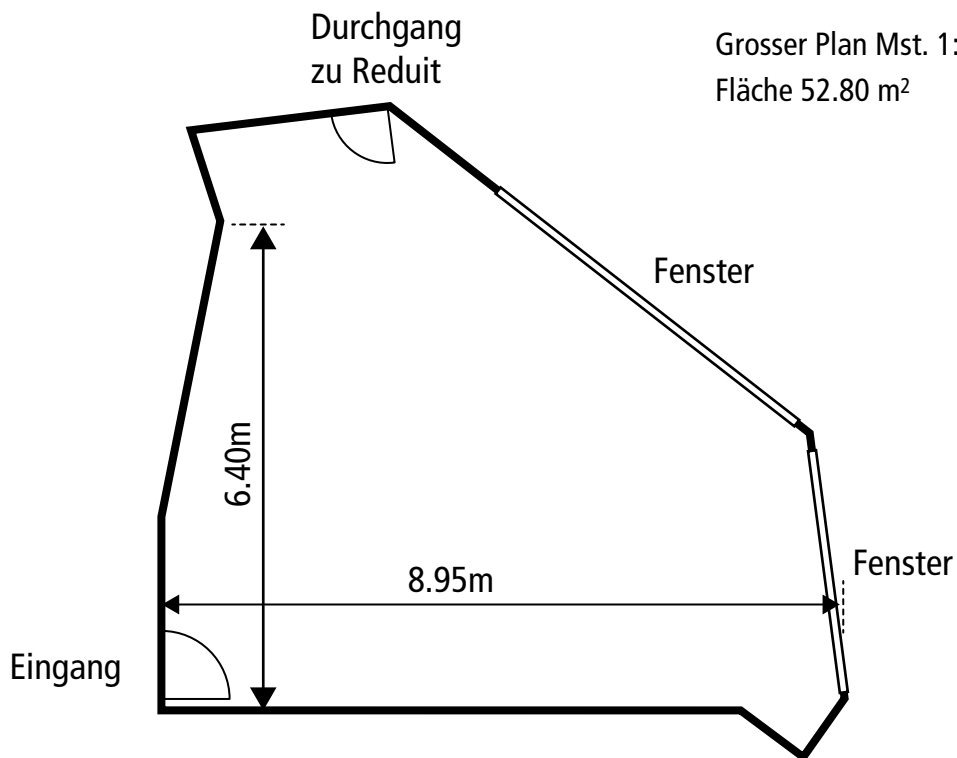
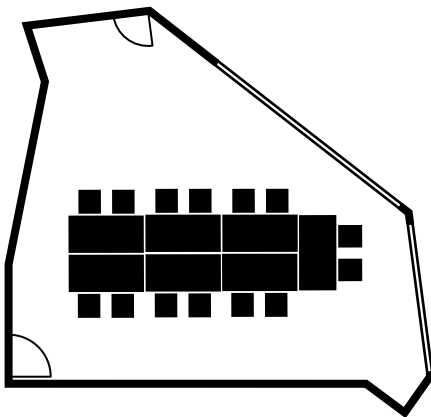


# Tagungsraum Tanne

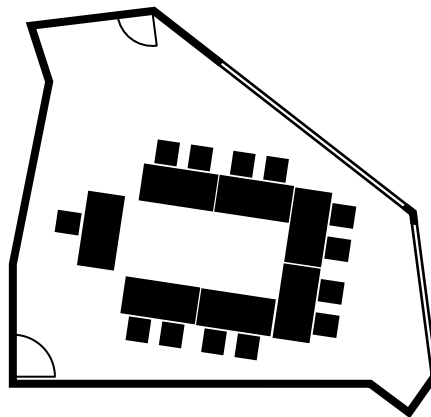
Grosser Plan Mst. 1:100  
Fläche 52.80 m<sup>2</sup>



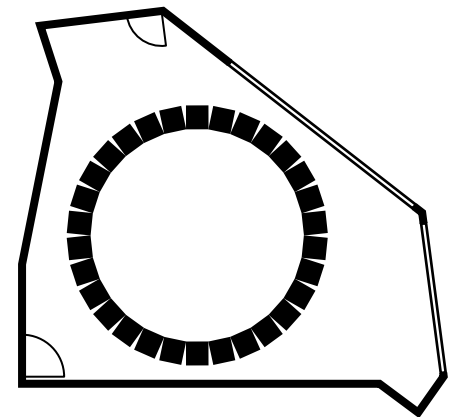
Bestuhlung Block: 13 Personen



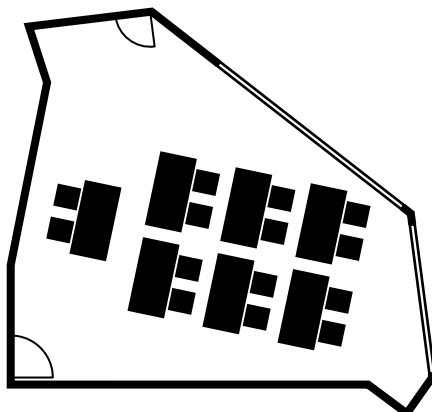
Bestuhlung U-Form: 13 Personen



Bestuhlung Kreis max.: 30 Personen



Bestuhlung Seminar: 15 Personen



Bestuhlung Konzert: 34 Personen

