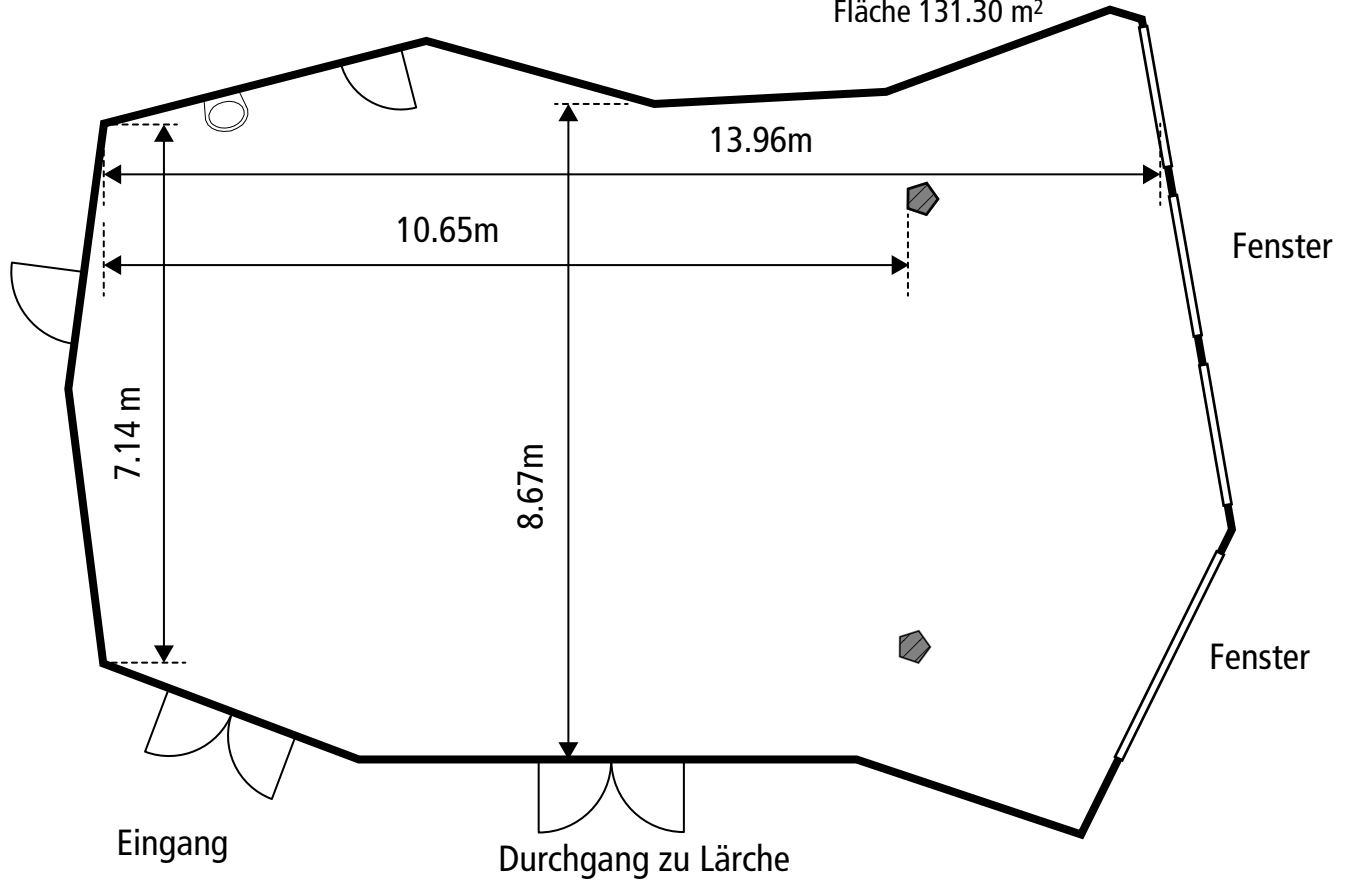


# Tagungsraum Eiche

◆ Säulen

Grosser Plan Mst. 1:100

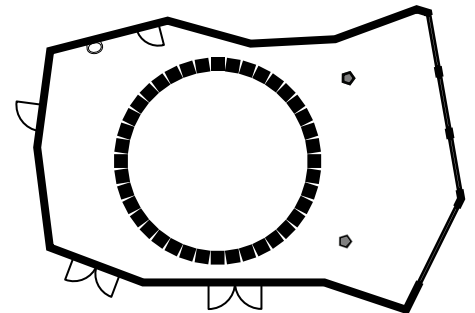
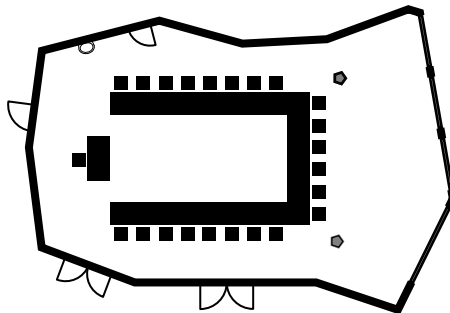
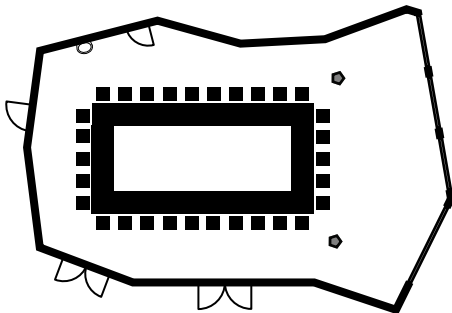
Fläche 131.30 m<sup>2</sup>



Bestuhlung Block: 30 Personen

Bestuhlung U-Form: 23 Personen

Bestuhlung Kreis max.: 40 Personen



Bestuhlung Seminar: 45 Personen

Bestuhlung Konzert: 96 Personen

